

We invite you to the Leading Networking of SNU Bio-CEO.

BT-IT Convergence Technology & Cutting-Edge Health Care Program

The SNU Bio-CEO Program provides a field of mutual exchange among the leaders in various fields, including pharmaceuticals, food and healthcare industries as well as IT and venture capitals business. We hope you to participate in the Bio-CEO to discuss together the future growth engines and the new technologies and industries for the period of the Fourth Industrial Revolution.

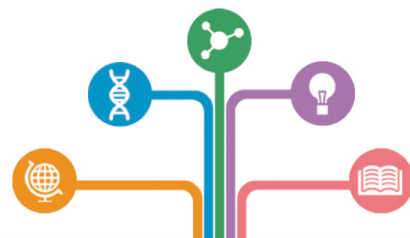
SNU BIO-CEO PROGRAM



Seoul National University Bio-MAX Institute



Greetings



Seoul National University Bio-MAX Institute

We invite you to the leading networking of SNU Bio-CEO.

- BT-IT Convergence Technology & Cutting-Edge Health Care Program
- The Program is SNU's only joint program incorporating eight colleges.

College of Natural Sciences/ College of Business Administration/ College of Engineering/ College of Agriculture & Life Sciences/ College of Veterinary Medicine/ College of Pharmacy/ College of Medicine/ College of Dental Science

Since the fall semester of 2006, the SNU Bio-MAX/N-Bio has operated the SNU Bio-CEO Program, which is SNU's first program participated by eight colleges, in order to establish the environment for bio-industry and foster also management specialists in this period of technological convergence where the boundaries between physical space, digital space and biological space are dissolved on the basis of the digital revolution in IT and electronical technologies.

Some developed countries, such as US, Europe and Japan, already started in early 1990s their activities to acquire the advanced technologies and the administration know-how in bio-industry by preparing an educational system to foster not only the researchers but also management specialists. Korea also needs a systematic educational program for managers to establish and share the visions of the bio-industry by strengthening the management competence of the management specialists in the industry and building network among them.

The Bio-CEO Program has been taken by not only the executive members of the bio-industry but also many in the fields of academy, legal professions, medicine, journalism, legislation/jurisdiction, and administration who are interested in the industry. All those who have taken the program have established the most powerful human network by organizing the SNU Bio-CEO Alumni Association, actively participating in various activities, including the exchange of information, and being qualified as the associate members of the Seoul National University Alumni Association.

The Bio-CEO Program will provide a field of mutual exchange among the leaders in various fields, including pharmaceuticals, food and medical device industries as well as management consulting and venture capitals business, those who have rare opportunities to gather together. We hope you please to participate in Bio-CEO Program to enjoy the meaning time together to discuss the BT industry, the new growth engine for the 21st century.

Program Commissioner Professor Kim, Byung Gee, College of Engineering, SNU

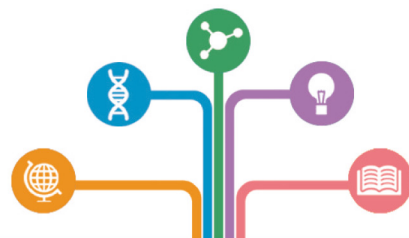
Manager Professor Kang, Kyung Sun, College of Veterinary Medicine, SNU

Associate Manager Professor Lee, Jeongsang, College of Medicine, SNU

Associate Manager Professor Han, Seung-Hyun, College of Dental Science, SNU



Curriculum Overview



Seoul National University Bio-MAX Institute



Introduction to Program

SNU's First Inter-College Joint Program

The SNU Bio-CEO Program is the first inter-college joint program since the establishment of SNU. The Program is managed by the College of Natural Sciences, College of Business Administration, College of Engineering, College of Agriculture & Life Sciences, College of Veterinary Medicine, College of Pharmacy, College of Medicine, College of Dental Science and the Bio-MAX/N-Bio.

The strength of the SNU Bio-CEO Program is that the advanced technologies and the administration know-hows in the field of bio-industry can be learned from the professors from SNU and other prominent Korean professors in the areas related to bio-industry.

Best Human Networking

Based on the excellent alumni network of the SNU Bio-CEO Program in the fields of biotechnology, pharmaceutical industry and medicine, the participants can utilize the best human network in the bio-industry in Korea to foster the convergence-type leaders required in the period of the Fourth Industrial Revolution.

Creating New Smart Business Models

The projects to connect biotechnologies with the existing businesses provide the opportunities to extend the classroom knowledge to the industrial sites, creating new high value-added business models for the 21st century.



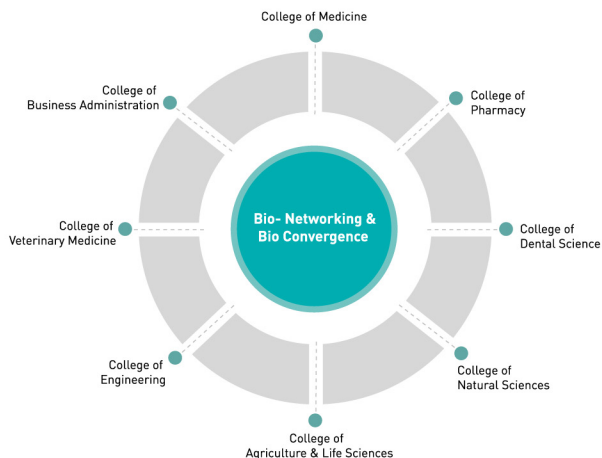
Benefits of Program

1. The program has an alumni association including all the graduates from the 1st to 21st classes (a total of 594 graduates) for the networking after the graduation.
2. The graduates from the program can participate in the Bio-CEO Core Forum and the Investment Market, held by the SNU Bio-MAX/N-Bio to explore the recent research trends and the promising industries.
3. The program provides the opportunities to conduct a joint study with the SNU professors in the fields of biotechnology or to receive technology transfer from them.
4. The program provides the On-line Continuing Education from the following class.
5. The graduates from the program are registered to the Seoul National University Alumni Association as the associate members to enjoy various benefits.



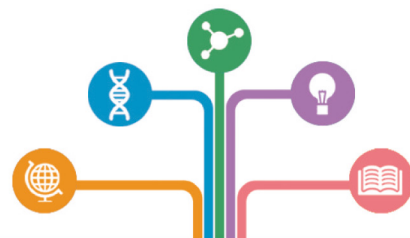
Lectures

The lectures are configured as integrated modules in eight fields centered on bio-networking and convergence biotechnology.





Key Curriculum



Seoul National University Bio-MAX Institute

Period of education

First half (March to August) / Second half (September to February) | Six months each.

- Time: 17:30~21:00 every Tuesday
- Location: SNU Gwanak Campus
- Lecture topics

Infectious Disease and New Drug Development	Advanced Cancer Therapy Technologies
Genetic Engineering	Biomaterials and Tissue Regeneration
Microbiome and Disease	Artificial Intelligence and Bioengineering
Future Medicine and Healthcare	Strategic Management for Bio-Enterprises

- Visit to industrial sites in Korea (Two days)
- Visit to industrial sites outside Korea (Three days)



>> SNU Bio-CEO Society Members

